

Organization and Systems: Quiz

Name: Key

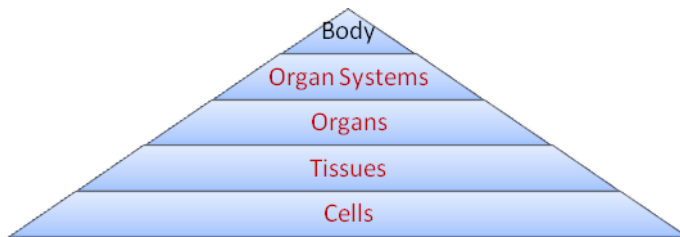
Organs	Body	Organization	Cells	Tissues
--------	------	--------------	-------	---------

Use the words above to fill in the blanks below.

1. The basic building blocks of the body are **cells**.
2. A group of similar cells working together forms **tissues**.
3. An organ system is formed by a group of similar **organs** working together.
4. A structure that allows for easy management of similar items refers to **organization**.
5. The groups of organ systems working together to maintain life forms the **Body**.

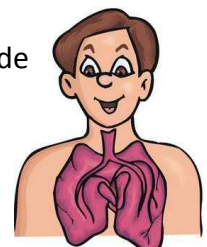
Fill in the pyramid below.

6. Use the following words: *Organs, Cells, Tissues, and Organ Systems*



Match the organ system with its function.

- | | | |
|----------|----------------|---|
| d | 7. Circulatory | a) Provides protection and support |
| c | 8. Respiratory | b) Breaks food down into chemicals the body can use |
| a | 9. Skeletal | c) Allows the exchange of oxygen and carbon dioxide |
| b | 10. Digestive | d) Transports blood throughout the body |
| e | 11. Excretory | e) Gets rid of wastes from the body |



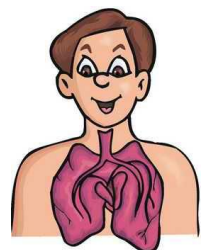
Nervous	Epithelial	Connective	Muscular
---------	------------	------------	----------

Use the words above to fill in the table below.

Tissue Type	Function	Example
12. Epithelial	Covers all body surfaces	Skin and lining of intestines
13. Muscular	Causes body parts to move due to contractions	Muscles in the heart, arms, and stomach
14. Nervous	Carries electrical messages through body to sense changes in the environment	Brain , spinal cord, and nerves
15. Connective	Binds structures together, provides support and protection	Bones, fats, and blood

Match the organ system with its function.

- b 16. Muscular a) Fights off sickness and disease
- d 17. Integumentary b) Allows for movement
- a 18. Immune c) Allows us to sense and react to changes in our environment
- e 19. Endocrine d) Covers and protects the body
- f 20. Reproductive e) Secretes hormones to maintain homeostasis
- c 21. Nervous f) Brings new life into the world

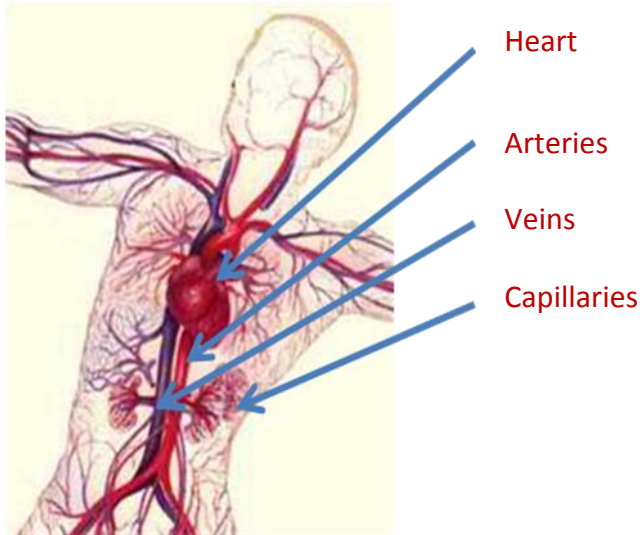


Structures of the Body: Quiz A

Name: **Key**

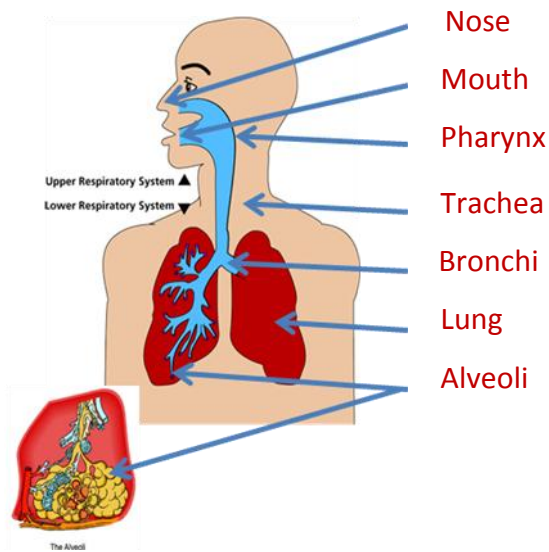
Capillaries	Arteries	Heart	Veins
-------------	----------	-------	-------

Use the words above to label the diagram of the circulatory system below.



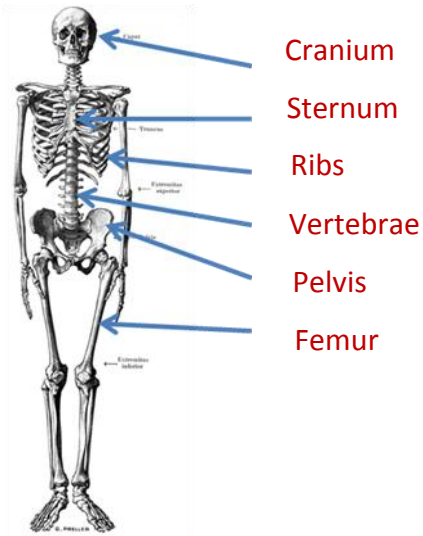
Bronchi	Lung	Mouth	Alveoli	Trachea	Pharynx	Nose
---------	------	-------	---------	---------	---------	------

Use the words above to label the diagram of the respiratory system below.



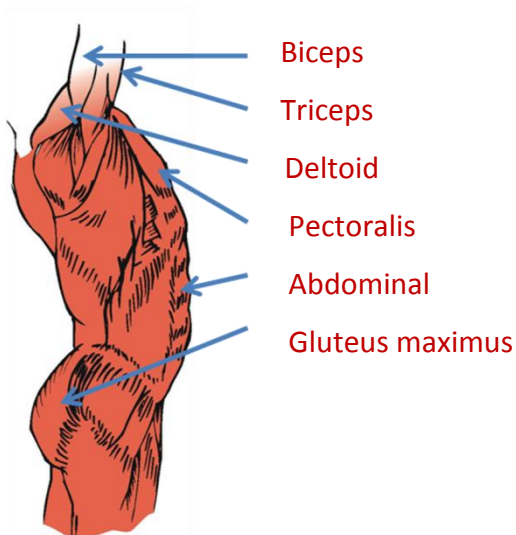
Femur	Cranium	Vertebrae	Pelvis	Ribs	Sternum
-------	---------	-----------	--------	------	---------

Use the words above to label the bones of the skeletal system below.



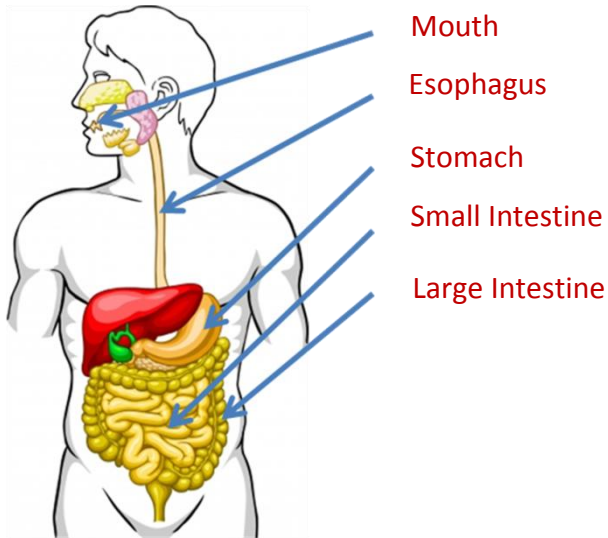
Deltoids	Abdominal	Biceps	Pectoralis	Triceps	Gluteus maximus
----------	-----------	--------	------------	---------	-----------------

Use the words above to label the skeletal muscles below.



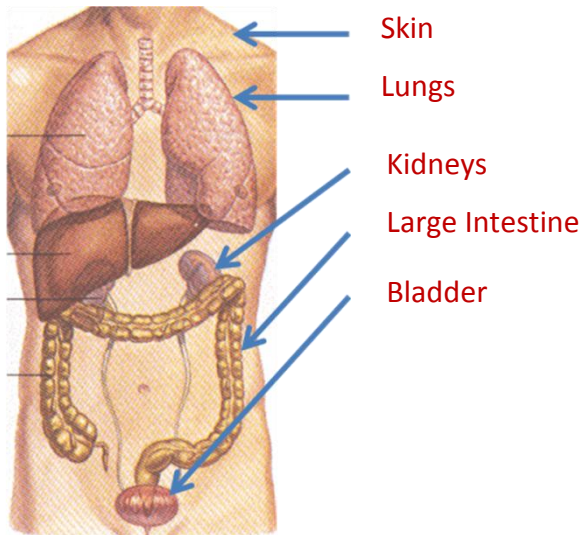
Esophagus	Mouth	Large Intestine	Stomach	Small Intestine
-----------	-------	-----------------	---------	-----------------

Use the words above to label the organs of the digestive tract below.



Skin	Large Intestine	Kidneys	Bladder	Lungs
------	-----------------	---------	---------	-------

Use the words above to label the excretory organs below.



Structures of the Body: Quiz B

Name: Key

Heart	Veins	Arteries	Alveoli	Mucus
-------	-------	----------	---------	-------

Match the words above with the description below.

- Veins** 1. Carries blood towards the heart
- Mucus** 2. Traps microorganisms and small particles
- Heart** 3. Pumps blood through blood vessels
- Arteries** 4. Carries blood away from the heart
- Alveoli** 5. Site where oxygen and carbon dioxide are exchanged into/from the blood

Cranium	Vertebrae	Ribs	Sternum	Pelvis	Femur
---------	-----------	------	---------	--------	-------

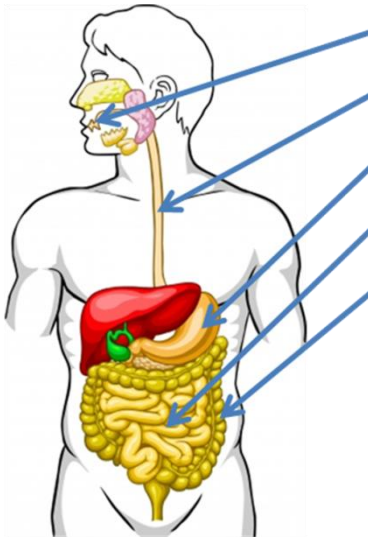
Match the words above with the description below.

- Ribs** 6. Attached to the vertebrae and protects the heart and lungs
- Pelvis** 7. Attachment point for leg bones
- Femur** 8. Manufactures red blood cells
- Sternum** 9. Attached to ribs and protects the heart and lungs
- Vertebrae** 10. Protects the spinal cord and provides vertical support
- Cranium** 11. Protects the brain

Match:

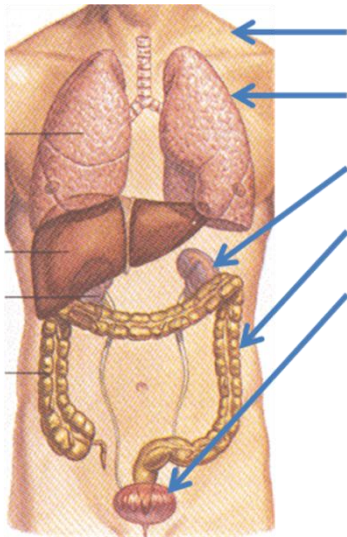
- b** 12. Smooth Muscle a) Attached to bones and allow for movement of the body
- c** 13. Cardiac Muscle b) Found inside organs and allow for movement within the body
- a** 14. Skeletal Muscle c) Forms the heart and allows for the movement of blood

Explain what happens in each organ during the digestion process.



- 15. Mouth – breaks food into small pieces and starches into sugars
- 16. Esophagus – connects mouth to stomach; Peristalsis moves food
- 17. Stomach – churns food into smaller pieces and soupy mixture
- 18. Small Intestine – food molecules are absorbed by villi
- 19. Large Intestine – absorbs water and minerals; stores feces

Describe what is expelled by each organ of the excretory system.



- 20. Skin – excess salt and water
- 21. Lungs – carbon dioxide
- 22. Kidneys – excess salt, water, and liquid waste
- 23. Large Intestine – solid waste from undigested food; feces
- 24. Bladder – filtered wastes from the kidney; urine

Match each organ or tissue with the system it belongs to.

- | | | |
|---|-----------------------|-------------------------|
| b | 25. White blood cells | a) Integumentary System |
| a | 26. Hair | b) Immune System |
| c | 27. Nerves | c) Nervous System |
| d | 28. Thyroid gland | d) Endocrine System |